

## Leg motor replacement

### Disassembling of defective motor:



Remove the cable lock and pull the cable out of the leg motor to avoid cable damage.

First remove the safety clip at the front bracket of the leg motor and pull out the bolt. Then remove the safety clip at the rear bracket of the leg motor and pull out the bolt.

### Preparation of new leg motor:



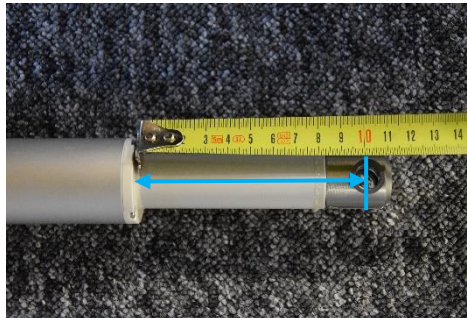
Remove the fork head on the defective leg motor and attach it to the new leg motor.



Connect the cable to the new leg motor. Hold the motor in your hand.

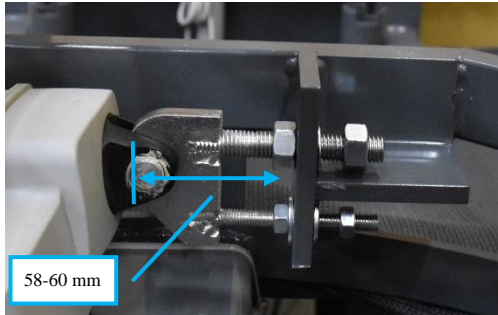


Move the motor to the outer position by holding the "up" button to the foot end inside.



Then press the "lying button" until the motor stops - in this position the distance from the center of the bolt hole to the large cylinder on the leg motor is approx. 10 cm.

## Installation of new leg motor:



First, mount the new leg motor to the front bracket of the motor and then attach it to the rear bracket. Loosen the nuts on the motor bracket.

Now lift the leg part to the highest position and make sure that the motor is not overloaded. If overload noise is heard from the motor housing, stop immediately, then adjust the nuts at the rear bracket. Then start over. Then repeat the setting in "chair position" - here the same applies in relation to adjusting nuts on the rear bracket.



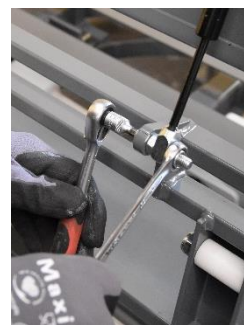
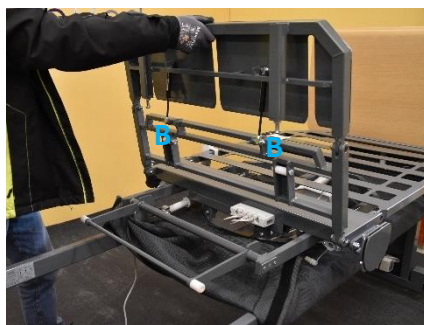
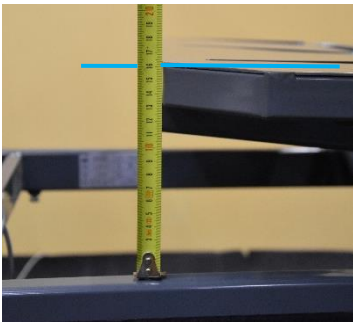


Test the bed again in both positions. Finally tighten the nuts with a tool.



Now reset the bed by pressing both buttons (leg part). This lowers the bed to the lowest position with the backrest down and the leg section raised.

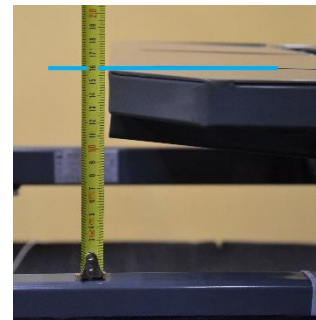
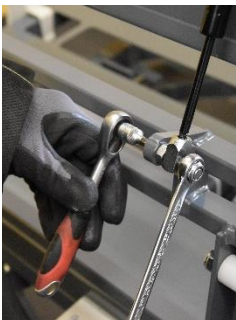
If the lying surface is lower than 16 cm from the top of the frame, adjust the height of the two gas struts. Do the following:



Loosen the leg-part from the axle with the two nylon wheels (A) - Remove the gas struts (B) at the bottom on both sides.



Turn the bracket on the gas strut in the direction where it is unscrewed. Two turns increase the distance between the leg-part and the top of the frame by 1 cm. It can be turned a maximum of 4 turns from the starting point where the bracket is turned all the way in.



Reattach the bracket to the gas strut. Important: do not overtighten the outer locking nuts as struts pivot on the bolts. Reattach the lower leg in the u-profile where the white nylon wheels run.